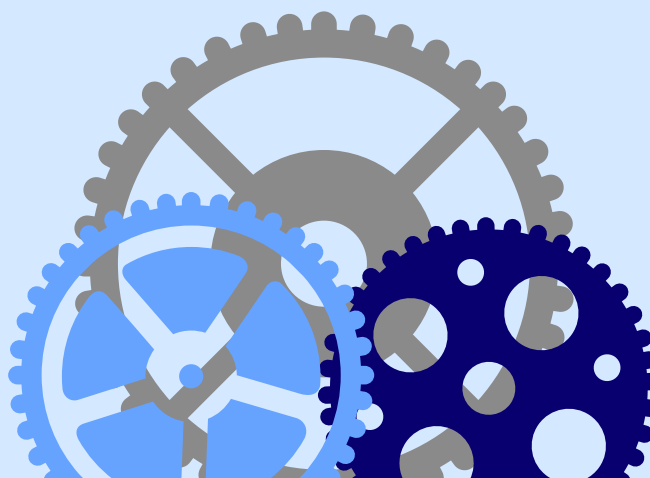


# RESOURCE COMPENDIUM

## ASHE GRADS

[WWW.ASHE.WS/GRADS](http://WWW.ASHE.WS/GRADS)

**SPRING 2021**



# EDITOR'S NOTE

## Welcome!

This interactive resource compendium presents information on a range of topics potentially useful to members of the ASHE Grads community. Specifically, this compendium includes resources on (a) project management; (b) research methods; (c) writing; (d) teaching; (e) self-care; (f) professional development and career planning; and (g) higher education organizations and conferences.

Across these areas, we've included different types of resources, including links to informational websites, short videos, and apps. Click on any of these to learn more.

As a final note, while this compendium covers a range of topics, it is not exhaustive. Rather, it is a living document—one that will be adapted, expanded, and refined over time through the feedback members of this community share with us. To share additional resources or to offer suggestions to improve this compendium, please email: [grads@ashe.ws](mailto:grads@ashe.ws)

Designed By:



Gabrielle Smith  
2019-2021  
ASHE Grads  
Web Consultant

In community,

**Karen Bussey**, 2018-2020 ASHE Grads Representative

**Stephanie Aguilar-Smith**, 2019-2021 ASHE Grads Representative

**Eileen Galvez**, 2020-2022 ASHE Grads Representative

**Gabrielle Smith**, 2019-2021 ASHE Grads Web Consultant



Stephanie Aguilar-Smith  
2019-2021  
ASHE GRADS  
Representative



Karen Bussey  
2018-2020  
ASHE GRADS  
Representative



Eileen Galvez  
2020-2022  
ASHE GRADS  
Representative

# CONTENTS

---

PROJECT MANAGEMENT | 4

QUALITATIVE, QUANTITATIVE, & MIXED METHODS RESEARCH RESOURCES | 7

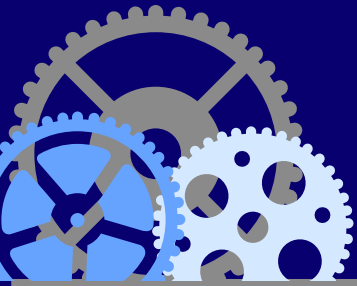
WRITING RESOURCES | 11

TEACHING RESOURCES | 14

SELF CARE | 16

PROFESSIONAL DEVELOPMENT & CAREER RESOURCES | 18

HIGHER EDUCATION ORGANIZATIONS & CONFERENCES | 21



## PROJECT MANAGEMENT

Keeping up with multiple projects, especially collaborative ones, can be a challenge. Here are a few project management platforms that may help you track your progress on different projects, alert you of action items, and facilitate communication among team members.

"PLANNING IS BRINGING THE FUTURE INTO THE PRESENT SO THAT  
YOU CAN DO SOMETHING ABOUT IT NOW."

— ALAN LAKEIN

## PROJECT MANAGEMENT

"I use [Asana] to coordinate all of my research and writing. I can create pages to share with teammates or professors. It can switch between lists > boards > calendar. It made my coursework manageable. It's similar to Trello or MeisterTask, but you can mark cards as complete, switch views, and its calendar integration is way, way better."

— Jonathan Toccoli, ASHE Grad



## ▶ CHECK OUT THESE VIDEOS

- [Asana Tutorial: How to Get Started with Asana in 2020](#)
- [Getting Started with Trello](#)
- [Trello Tutorial 2020: How To Use Trello To Crush Productivity](#)
- [ClickUp Tour, Pros and Cons, & How to Set It Up](#)
- [How I Plan and Organize My Life \(with Notion\)](#)

# References & Citations

There are multiple systems to keep track of references and format citations. For example, Mendeley is a free reference manager and PDF reader designed for researchers. Available in both mobile and desktop application, it helps users organize and cite sources. A few other options include:

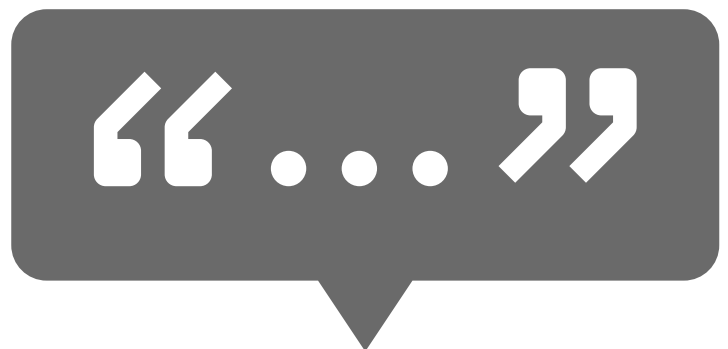
zotero

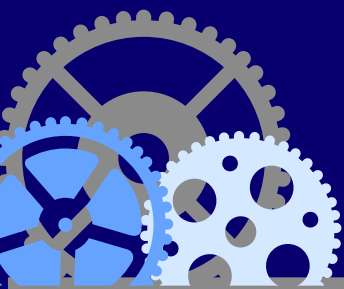
EndNote™



**Want to learn more about citation managers? Check out some of YouTube videos:**

- [Learn how to use Zotero in 30 mins](#)
- [Using Zotero for academic writing.](#)
- [Getting Started with Mendeley.](#)
- [EndNote Training & Support](#)
- [Everything you need to know about Endnote, Mendeley, and Zotero](#)
- [Zotero vs Mendeley](#)





## QUALITATIVE, QUANTITATIVE, & MIXED METHODS RESEARCH RESOURCES

There are countless of texts on qualitative, quantitative, and mixed methods, so instead, this section provides links to several methods training opportunities, educational blogs, and more.

### **Twitter Handles**

Research Whisperer [@researchwhisper](https://twitter.com/researchwhisper)

Dr Heather Piwovar [@researchremix](https://twitter.com/researchremix)

NCRM [@NCRMUK](https://twitter.com/NCRMUK)

"RESEARCH IS FORMALIZED CURIOSITY; IT IS POKING  
AND PRYING WITH PURPOSE"  
— ZORA NEAL HURSTON





# Focus Group

## QUALITATIVE, QUANTITATIVE, & MIXED METHODS RESEARCH RESOURCES



[What Is Research  
Methodology In A  
Dissertation or Thesis?](#)



[How to Write a Research  
Methodology in 4 Steps](#)

**[The Creative Researcher](#)** is a site for researchers or "anyone who might not consider themselves 'researchers,' but who get inspired from listening to their audiences, clients, or customers. It is a place that demystifies the research process, empowering anyone to speak to their audiences, while feeling confident that they are getting the most out of it!" (n.d., para. 1).

**John Latham's Research  
Methods Blog.** See [here](#).



## METHODS TRAINING

AERA PEERS Research Methods Series

ASHE Research Methods Workshops

Data Camp

Ethnographic & Qualitative Research Conference

ICPSR Summer Program in Quant. Methods of Social Research

ICQI (International Congress of Qualitative Inquiry).

Institute for Qualitative and Multi-Method Research

Institute in Critical Quant Comp, & Mixed Methods

Odum Institute for Research in Social Science

Percontor: Educational Research & Training

Research Talks

Q-Q Research Consultants

## TRANSCRIPTION SERVICES

REV



TEMI

OTTER AI

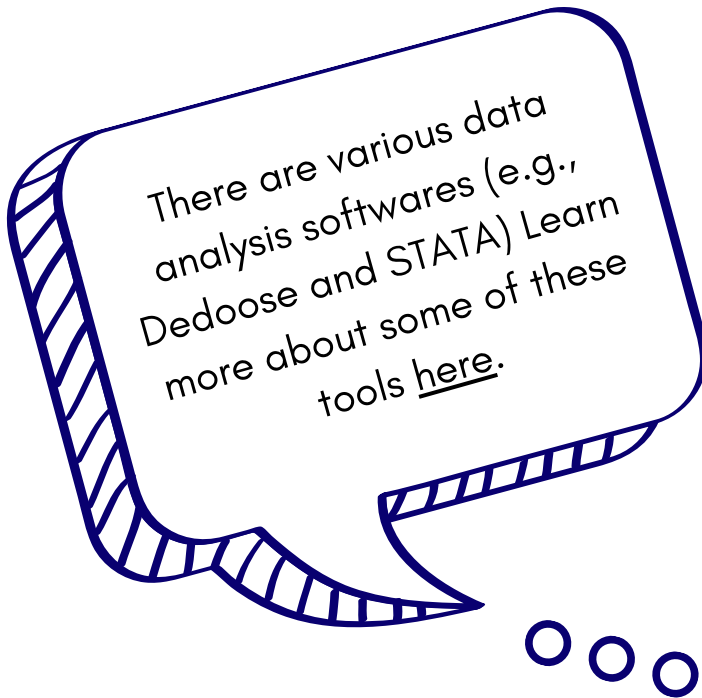


# FINDING SOURCES AND DATA

Identifying and locating accessible data and datasets, as well as staying current with the research in the field and in your specific research area can be daunting tasks. For some potential data sources and publication alert systems see below.

## DATA BASES

[Carnegie Classification Data](#)  
[Census Bureau](#)  
[College Scorecard](#)  
[Consortium for Higher Edu Benchmarking Analysis](#)  
[Data.gov](#)  
[Higher Education Research Institute](#)  
[National Center for Education Statistics \(NCES\)](#)  
[National Student Clearinghouse® Research Center](#)  
[Pew Research Datasets](#)  
[U.S. Bureau of Labor Statistics](#)  
[What Works Clearinghouse](#)  
[WICHE Data Resources](#)



There are various data analysis softwares (e.g., Dedoose and STATA) Learn more about some of these tools here.

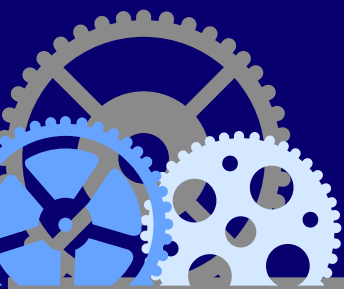
## PUBLICATION ALERT SYSTEMS

**Academia** is a social networking website for academics, which also serves as a repository for academic journal articles.

**Google Scholar** is a freely accessible web search engine that indexes the full text or metadata of scholarly literature across an array of publishing formats and disciplines.

**Researcher App** is a free journal finding application that helps research find relevant articles for their work. More than 3 million researchers use this app to stay up to date with the academic literature in their field and area of expertise.

**Research Gate** is like Facebook for scholars, in that it helps you connect with other researchers, while also updating you on the newest research in your field. Also, you can ask research-related questions on Researchgate which can be answered by several experts.



## WRITING RESOURCES

This section offers writing-related resources, such as links to various writing centers' tools and tips, information on APA Style, and useful web applications.

### Twitter Handles

Write that PhD [@WriteThatPhD](#)

Daily Writing Tips [@writing\\_tips](#)

"A WORD AFTER A WORD IS POWER"  
— MARGARET ATWOOD



# WRITING RESOURCES



## WRITING COACHING & SUPPORT

Have you considered working one-on-one with a writing consultant/coach or joining a writing group? They can provide much needed support and accountability and help you process ideas and feedback!

## APA FORMATTING & STYLE

For guidelines on how to write in and format work per APA style as well as to access APA 7th style sample papers and short quizzes to check your understanding of APA technicalities, see the following resources.

[American Psychological Association Style](#)

[Purdue Owl](#)

[NIC Library & Learning Commons](#)

## WRITING CENTERS

Writing centers provide tons of tips, advice, and handouts on a range of writing-related topics. Check out some of these:

[Ashford University](#)

[George Mason University](#)

[University of North Carolina-Chapel Hill](#)

[University of Kansas](#)

[University of Texas-Austin](#)

[University of Wisconsin-Madison](#)

[Walden University](#)

## OTHER RESOURCES

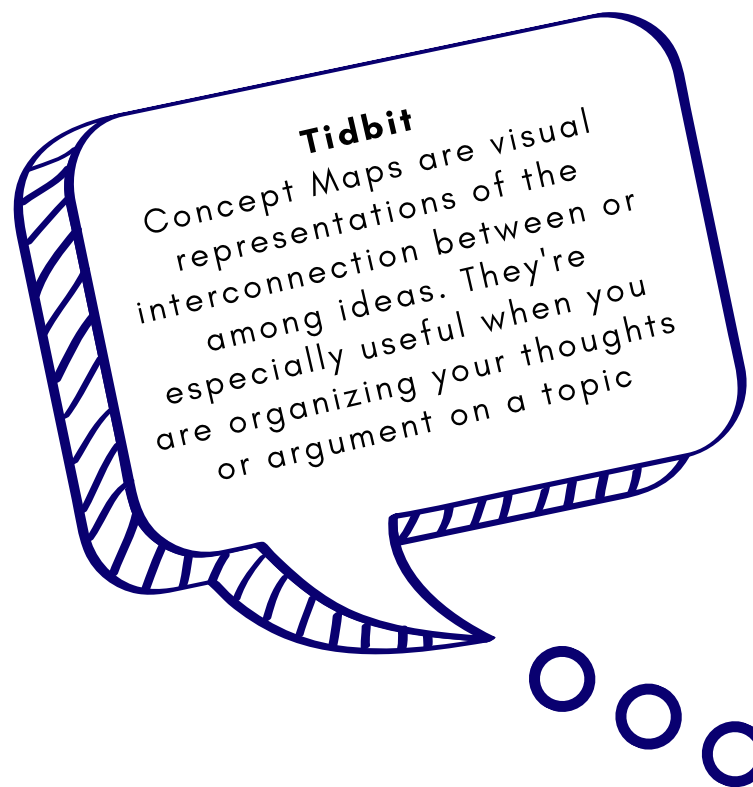
**Academic Phrase Bank.** This website offers examples of how to phrase parts of the main sections of a research paper.

**Plagiarism Checker.** This free app detects duplicate content in your papers from search engines like Google and Yahoo.

**Grammarly.** This online tool checks grammar and punctuation and assists in making writing clear and concise.

# CREATIVE TOOLS AND TEMPLATES

For templates for papers, presentations, reports, social media posts, infographics, blogs, agendas, timelines, lesson plans, and much more, check out the resources below:



**bubbl.us**

[BUBBL.US](https://bubbl.us)



[MURAL.CO](https://mural.co)

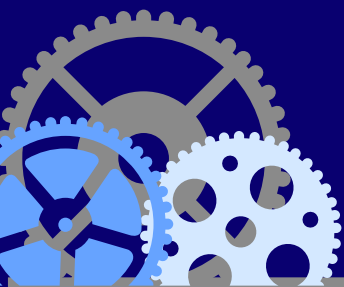


[PIKTOCHART](https://piktochart.com)



[CANVA](https://canva.com)





## TEACHING RESOURCES

This section offers teaching-related resources, such as a list of teaching and learning centers at several universities and syllabi for higher education-related courses.

### Twitter Handles

Faculty Focus [@facultyfocus](https://twitter.com/facultyfocus)

Teaching Professor [@teachprof](https://twitter.com/teachprof)

Debbie Fucoloro, PhD [@debbiefuco](https://twitter.com/debbiefuco)

"THE CLASSROOM REMAINS THE MOST RADICAL  
SPACE OF POSSIBILITY IN THE ACADEMY"  
— BELL HOOKS





# TEACHING RESOURCES

## **Tidbit.**

Visit the [Learning Support Centers in Higher Education](#) for information on the history, relevant names, & definitions of such centers in higher education.

## **The Character Clearinghouse**

A national information center for current educational strategies, best practices, leadership efforts, student perspectives, events, and discussion to assist institutions in promoting moral and civic responsibility.

## **Open Education Network**

This is an online community for online distance learners

## **Teaching & Learning-Related Centers**

[Center for Educational Innovation](#)

[Cornell Center for Teaching.](#)

[Innovation](#)

[Duke Kunshan](#)

[DePaul University.](#)

[Stanford University.](#)

[University of Washington](#)

## **Syllabi Support**

[ACPA The Syllabus Clearinghouse](#)

[A Syllabus Tip: Embed Big Questions](#)

[Creative Approaches to Syllabus](#)

[Creating a Learner-Centered Syllabi](#)

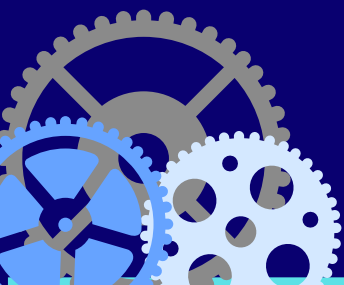
## **Additional Resources**

[How Much Should We Assign?](#)

[Estimating Out of Class Workload?](#)

[Global Education](#)

[The Innovative Instructor Blog.](#)



## SELF CARE, WELLNESS, AND MENTAL HEALTH

Graduate school can be incredibly taxing in so many ways.  
This section has self-care, wellness, and mental health  
resources.

### Twitter Handles

Self Care Bot [@selfcare\\_bot](#)

Mental Health Notes [@depressionnote](#)

"I LEARNED A LONG TIME AGO THE WISEST  
THING I CAN DO IS BE ON MY OWN SIDE, BE AN  
ADVOCATE FOR MYSELF AND OTHERS LIKE ME."  
— MAYA ANGELOU





# Self Care

We often continue to put our work first, only taking time out for self-care when our list of tasks is complete. Even the language of “taking time out” is indicative of how ingrained self-care as a reward for meeting increasingly high expectations around work and productivity is in our psyche. We also continue to struggle with decoupling our CVs from our self-worth, and taking our own health and well-being into account when it comes to our practice as scholars (e.g., Harris & Nicolazzo, 2017). In these ways, we put the university first, we put capitalism first, and we reinforce settler colonialism.  
— Squire & Nicolazzo, 2019, p.10

Here are a few self-care guides and tips:

[Grad Student How-To: A Guide to Self-Care](#)

[A Doctoral Student's Guide to Self-Care](#)

[5 Tested Tips to Battle Burnout with Better Self-Care](#)

[These Self Care Apps Will Help You Meet Your Goals](#)



## MINDFULNESS



Headspace is an app for mindfulness and meditation.

## SLEEP

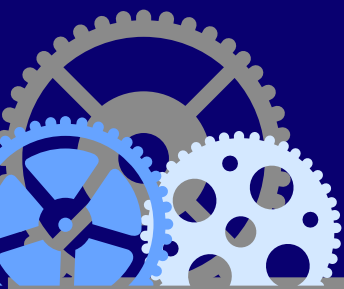


Calm is an app for meditation and improving sleep habits.

## DIGITAL DETOX



OFFTIME is an app designed to help track and reduce screen time.



# PROFESSIONAL DEVELOPMENT AND CAREER RESOURCES

## Twitter Handles

Beyond the Professoriate [@BeyondProf](#)

Free the PhD [@FreethePhD](#)

Jobs On Toast [@jobsontoast](#)

Conversations [@careerconversa1](#)

#ECRchat [@ECRchat](#)

"DON'T ASK YOURSELF WHAT THE WORLD NEEDS. ASK  
YOURSELF WHAT MAKES YOU COME ALIVE, AND GO  
DO THAT, BECAUSE WHAT THE WORLD NEEDS IS  
PEOPLE WHO HAVE COME ALIVE."

— HOWARD THURMAN



## PROFESSIONAL DEVELOPMENT & CAREER RESOURCES

Deciding what's next in your career can be tricky, so can actually finding a position. For insight, tips, career-related advice, and information on compensation and cost of living, see the resources provided below:

### ADVICE BLOGS, PROFESSIONAL NETWORKS, & MORE

[The Professors is In](#)  
[The Leveraged PhD](#)  
[From PhD to life: Meaningful Careers for PhDs](#)  
[Jobs on Toast: Career confidence for PhDs](#)  
[with Chris Humphrey](#)  
[Beyond Academia](#)  
[Career Conversations \(YouTube Channel\)](#)



**Academic Career Readiness Assessment** is a tool designed to provide graduate students and postdoctoral scholars with the information they need to be successfully hired as faculty, regardless of their understanding of the intricacies of the U.S. education system and of the mentoring ability of their advisor.

**Cost of Living Wizard** compares living-cost indexes and salary differentials. Shows how your disposable income will be affected by a relocation, the salary adjustment needed to maintain your standard of living, and what salary increase or decrease is likely given local market factors.

**National Center for Faculty Development & Diversity (NCFDD)** is an independent professional development, training, and mentoring community for faculty members, academic staff, postdocs, and graduate students.



## ▶ ASHE JOB BOARD

ASHE features open positions on the ASHE website and in its weekly listserv emails. On the website, you can filter your job search by category, status, or by keywords. To view all job postings, simply click "Search Jobs."

## ▶ **MORE JOB SEARCH RESOURCES**

To receive the latest postings on a range of higher education-related positions, check out some of the following search engines:

[University Jobs](#)

[The Chronicle of Higher Education Community](#)

[HigherEd 360](#)

[HigherEd Jobs](#)

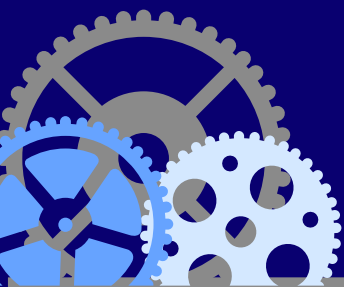
[Higher Education Recruitment Consortium](#)

[PostdocJobs](#)

[ACPA Commission for Professional Preparation Position Announcements](#)

[USAJOBS](#)

[HigherEdPolicyJobs](#)



## **HIGHER EDUCATION-RELATED ORGANIZATIONS & CONFERENCES**

There are so many higher education-related organizations, associations, councils, institutes, and conferences. This section presents only some of the key ones in the field.





## ABOUT US



The Association for the Study of Higher Education (ASHE) promotes collaboration among its members and others engaged in the study of higher education through research, conferences, and publications, including its highly regarded journal, *The Review of Higher Education*. ASHE values rigorous scholarly approaches to the study of higher education and practical applications of systemic inquiry.

## EVENTS AND OPPORTUNITIES

- Weekly Newsletters
- [Early Career Faculty Workshops](#)
- [Graduate Student Policy Seminar](#)
- [Research Methods Workshops](#)
- [Council on Ethnic Participation Mentor-Protege Program](#)

## ANNUAL CONFERENCE

Hosted each year in mid-November is ASHE's annual conference, where members highlight innovative insights in the study of higher education through paper presentations; poster presentations; roundtable discussions; and performance, digital, or visual means. ASHE also hosts pre-conference forums focused on the intersections of higher education with public policy, international higher education, race and ethnicity, academic programs, and athletics.

## General

American Council on Education  
American Institutes for Research  
Association of American Colleges & Universities  
Association of Commonwealth Universities  
Association of Governing Boards of Universities & Colleges  
Association of the Universities of Asia & the Pacific  
Council of Graduate Schools  
Council for Higher Education Accreditation  
Council of Higher Education Management Associations  
EDUCAUSE  
Higher Learning Commission  
International Association of Universities  
National Association of Independent Colleges & Universities  
Southern Education Foundation



---

## Community Colleges

Center for the Study of Community Colleges  
Community College Baccalaureate Association (CCBA)  
Community College Research Center  
Council for the Study of Community Colleges  
Institute on Edu. & the Economy/ CC Research Center  
Office of Community College Research & Leadership

---

## Faculty

Adjunct Nation  
American Association of University Professors (AAUP)  
The New Faculty Majority

# Minority-Serving Institutions

AANAPISIs

Alliance of Hispanic Serving Institution Educators

American Indian College Fund

American Indian Higher Education Consortium

Excelencia in Education

Hispanic Colleges & Universities Association

Natl Historically Black Colleges & Universities Foundation

Rutgers Center for Minority Serving Institutions

The Natl Association for Equal Opportunity in Higher Education

Thurgood Marshall College Fund

United Negro College Foundation

---

## Policy-Related Organizations

Academy for Educational Development

Center for American Progress

EdPolicyWorks

Institute for Higher Education Policy

New America

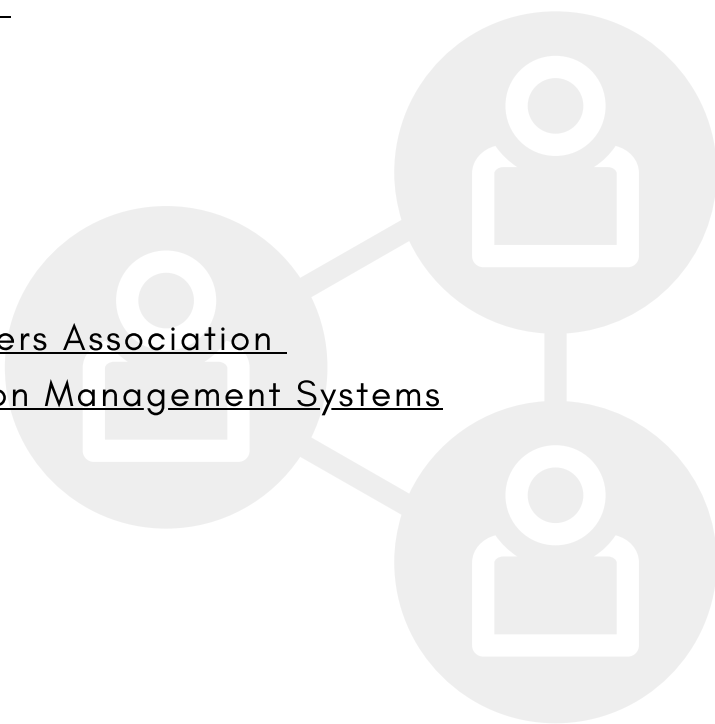
Public Policy Institute of California

State Higher Education Executive Officers Association

The National Center for Higher Education Management Systems

The Ed Trust

Third Way



# Research Centers & Projects

Brookings Institution

Campus Computing Project

Center for International Higher Education

Center for Advanced Study of Teaching & Learning

Center for Budget & Policy Priorities

Center for Studies in Higher Education

Center for the Study of College Student Retention

The Center for Race & Public Education in the South

Higher Education Research Institute

Higher Education Center for Alcohol & Other Drug Abuse & Violence Prevention

International Comparative Higher Education Finance & Accessibility

Lumina Foundation

Penn State University's Center for the Study of Higher Education

National Center for Academic Transformation

National Center for Postsecondary Improvement (NCPI)

National Center for Public Policy and Higher Education

National Resource Center for The 1st-Year Experience & Students in Transition

Rockefeller Institute

Pullias Center for Higher Education

Stanford Institute for Higher Education Research (SIHER)

TIAA Institute

---

# Regional Associations & Centers

Midwestern Higher Education Compact

New England Resource Center for Higher Education

Southern Association of Colleges & Schools Commission on Colleges

Western Interstate Commission for Higher Education

## More Higher Education Associations

American Academic Leadership Institute (AALI)

American Association of University Women (AAUW)

American Association of Blacks in Higher Education (AABHE)

American College Personnel Association (ACPA)

American Educational Research Association (AERA)

Association for Education Finance and Policy (AEFP)

Association for Tertiary Education Management

Association for the Study of Higher Education (ASHE)

Council of Higher Education Management Associations (CHEMA)

Leadership in Higher Education Conference

National Association of Student Personnel Administrators (NASPA)

National Organization for Student Success (NOSS)

National Conference on Race & Ethnicity in American Higher Education

The Jon C. Dalton Institute on College Student Values

There are numerous professional organizations geared for student affairs professionals, such as the National Panhellenic Conference, the National Association for College Admission Counseling, and the Association of College and University Housing Officers-International. In fact, most functional areas have their own associations, which hosts tailored conferences, workshops, webinars, etc.

For more information on such organizations and student affairs functional areas, see these websites:

- <https://www.studentaffairs.com/resources/websites/functional-areas/>
- <https://www.studentaffairs.com/resources/websites/professional-associations/>

# ASHE GRADS

